

# JM Productions, Inc.



(716) 648-5100

fax (716) 648-5292

[jmp@derbyinfo.net](mailto:jmp@derbyinfo.net)

[www.jmproductionsinc.com](http://www.jmproductionsinc.com)

## 2010 CUYAHOGA COUNTY FAIR BEREA, OHIO

**"WORLD'S LARGEST DEMOLITION DERBY"**

**Monday, August 9<sup>th</sup> at 8:00 pm and  
Sunday, August 15<sup>th</sup> at 3:00 & 7:00 pm**

**PURSE: \$2,140**

Only 1980 and newer vehicles (unless pre-1980 body style is the same) may be used in events 2, 3 & 4 on Monday and in the feature event on Sunday.

**Entry Information Brochure**

**All Event Winner Trophies courtesy of  
NAPA AUTO PARTS WITH 2 LOCATIONS**



**762 Front Street  
Berea, OH  
440-234-9400**

**26075 Lorain Road  
North Olmsted, OH  
440-734-4480**

**Towing, Special award and best appearing car  
trophies courtesy of "Hootie's Hauling"**  
(216)253-0598



**"WORLD'S LARGEST DEMOLITION DERBY"**  
**MONDAY, AUGUST 9<sup>th</sup> at 8:00 pm and  
SUNDAY, AUGUST 15<sup>th</sup> at 3:00 & 7:00 pm**

**PURSE: \$2,140**

### DEMOLITION DERBY INFORMATION

1. Entry fee (see entry form) should be made payable to JM Productions, Inc., and must be a Money Order, Bank Draft or Business Check (Federal ID number must be hand written on all business checks). **NO PERSONAL CHECKS!** Avoid late entry fee at the pit gate, enter early.

2. Mail Entry and Fee to:

**"World's Largest Demolition Derby"**  
c/o Cuyahoga County Fair, Fair Secretary  
P.O. Box 135, Berea, OH 44017-0135.

4. **PIT GATE:** Will be open between the hours of 5:00 - 7:00 pm on Monday, August 9<sup>th</sup>. Cars arriving after 7:00 pm, will not be allowed to compete. Cars registering for shows on Sunday, August 15<sup>th</sup> must register at the Pit Gate between 12:00 pm and 2:00 pm. Cars entering after 2:00 pm will NOT be allowed to compete - **NO EXCEPTIONS!** All participants must enter and exit the Fairgrounds through Gate #5, off Bagley Road.

5. **PIT PASSES:** will be sold to drivers and crew members at the Pit Gate for \$15. On Sunday, August 15<sup>th</sup> for \$15 each, or \$20 for both shows.

6. You must be 16 years old to enter the pits. Anyone under the age of 18 must sign a Minor's Release with a parent or guardian during the pit gate hours.

7. The Fair has been notified that the Berea Police Department will enforce ALL traffic laws involving cars operated on city streets, including but not restricted to: ALL safety equipment, lights, glass, brakes, tires, improper towing and improper registration.

8. **Car/Van Removals:** Driver's only who register the vehicle will be permitted to remove their vehicles by 9:00 am the day following their event. If your vehicle is left at the fairgrounds after 9:00 am, the title of the vehicle must be given to Hootie's Hauling. All other vehicles will be towed at owners/driver's expense.

### **PROGRAM OF EVENTS**

**MONDAY, AUGUST 9<sup>th</sup>, 2010**

Only 1980 and newer vehicles unless (pre-1980 same body style) may be used in events 2, 3 & 4 on Monday.  
**(You may enter all 4 events)**

**EVENT #1 Mini Vans:** 4 or 6 cylinders, 2-wheel drive, must weigh between 2,500 - 4,300 lbs. Weight source NADA Book. Mini van rules are the same as car set up. (See JM Production Rules). The "WINNERS" (last 2 vans running) will receive a trophy and \$50 (1-10 Vans - 1 "Winner" only). "Winner" or "Winners" are guaranteed a starting position in the Championship Event on Sunday, August 15<sup>th</sup> at 7:00 pm providing a passenger vehicle 1980 or newer (unless pre-1980 body style is the same) is used whose manufactured weight is between 2,600 and 4,800 lbs. A "Last Chance" event will be scheduled providing we have enough vehicles.

**EVENTS #2 - #4 Passenger Cars:** The "Winner" (last car running) will receive a trophy and \$50. The "Best-of-Show" driver (second last car running) will receive a trophy and \$50. All "Winners" are guaranteed a starting position in the Championship Event on August 15<sup>th</sup>, Providing a passenger vehicle 1980 or newer (unless pre-1980 body style is the same) is used whose manufactured weight is between 2,600 and 4,800 lbs.

**EVENT #5 "Last Chance":** All NON-winners from #2, #3 and #4 events. "Winners" (last two cars running) will each receive a trophy, \$50 and will qualify for the Championship Event on August 15<sup>th</sup>, Providing a passenger vehicle 1980 or newer (unless pre-1980 body style is the same) is used whose manufactured weight is between 2,600 and 4,800 lbs.

**A "Best Appearing Car/Van" Trophy  
will be given in the first 4 events  
on August 9<sup>th</sup> ONLY.**

#### **JMP NEAT LEGAL TRICKS:**

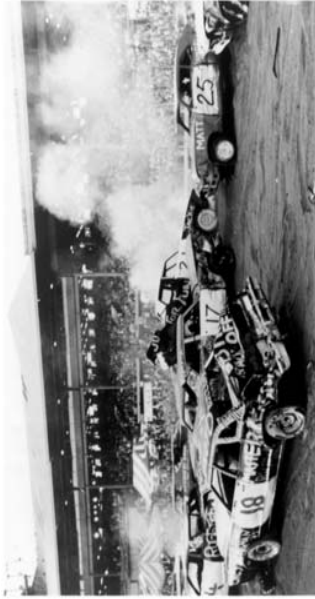
- Move battery next to the firewall (heater box area).
- Replace 2-feet of metal gas line next to gas tank with a rubber hose and clamps.
- Spray spark plugs/wires (distributor cap) with spray ignition waterproofing and cover distributor with a baggie.
- Move any electrical boxes in grill area to the firewall.
- Cut transmission cooler lines at transmission and join them together (hose and clamps).
- Pad driver's door (inside) with foam from rear seat cushion.

**SUNDAY, AUGUST 15<sup>th</sup>  
3:00 PM SHOW PROGRAM**

(You may enter all 3 qualifying events)

<p><b>EVENT #1 Compact Car Qualifier:</b> Open to any American or Foreign made passenger car or station wagon, 4 cylinders, two or four door, 2-wheel drive, hard-top automobile is allowed except rear engine vehicles and cars whose manufactured weight is over 2,700 pounds. (Source NADA Used Car Guide or bluebook.) A compact heat will be added to the 7:00 pm show <b>PROVIDING</b> we have enough cars.</p>
<p><b>EVENT #2 Qualifier:</b> All damaged <b>NON-winning</b> cars from August 9<sup>th</sup>, within the weight limits of 2,600 – 4,800 pounds.</p>
<p><b>EVENT #3 &amp; #4 Passenger Car Qualifier:</b> All fresh cars 2,600 – 4,800 pounds.</p>
<p><b>EVENT #5 Last Chance:</b> All <b>NON-winning</b> drivers and cars from Events #2, #3 &amp; #4.</p>

In each event on August 15<sup>th</sup> at 3:00 pm, the "Winners" (last two cars running) will receive a trophy, \$40 and both drivers will be qualified to run in the Championship Event in the evening show. Winners must compete with a passenger vehicle 1980 or newer (unless pre-1980 body style is the same) whose manufactured weight is between 2,600 and 4,800 lbs. (NO Compact cars permitted in this event!)



**WORLD'S LARGEST DEMOLITION DERBY**  
J.M. PRODUCTIONS, INC. 4751 SOUTHWESTERN BLVD. HAMBURG, NY 14075-1808 (716) 648-5100

**JM Productions is also producing the following motor sports events in your area!**

<b>Holmes County Fair</b> Holmes, OH	Double Figure 8 Racing and Compact Demolition Derby 8/17, 8 pm
<b>Canfield Fair</b> Canfield, OH	Ohio State Demolition Derby Championship - 9/3, 8 pm

**SUNDAY, AUGUST 15<sup>th</sup>  
7:00 PM SHOW PROGRAM**

(You may enter all 3 qualifying events)

<p><b>EVENT #1:</b> All wrecked cars from August 9<sup>th</sup> &amp; 15<sup>th</sup> shows. <b>NO COMPACT CARS/VANS!</b> "Winners" (last two cars running) will receive a trophy, \$30 and both drivers will qualify to run in the Championship Event. Winners must compete with a passenger vehicle 1980 or newer (unless pre-1980 body style is the same) whose manufactured weight is between 2,600 and 4,800 lbs.</p>
<p><b>EVENT #2 - #4 Qualifier:</b> All new entrants with fresh passenger cars 2,600 – 4,800 pounds. "Winners" (last two cars running) will receive a trophy, \$30 and both drivers will qualify to run in the Championship Event. Winners must compete with a passenger vehicle 1980 or newer (unless pre-1980 body style is the same) whose manufactured weight is between 2,600 and 4,800 lbs.</p>
<p><b>EVENT #5 CHAMPIONSHIP:</b> All winners must compete with a passenger vehicle 1980 or newer (unless pre-1980 body style is the same) whose manufactured weight is between 2,600 and 4,800 lbs. The TEN "Winners" and "Best of Show" drivers from August 9<sup>th</sup>, the TEN "Winners" from the August 15<sup>th</sup> afternoon show and the EIGHT "Winners" from the above events will compete. You can use a fresh car for this event. The Champion will receive the Championship Trophy and \$700. Second place will receive a Trophy and \$300.</p>

**A "Special Award" trophy will be awarded in each event on Sunday August 15<sup>th</sup> to the driver who exhibits outstanding effort and who was not an event winner.**

**ENTRY BLANKS ALSO AVAILABLE AT:**



NAPA AUTO PARTS WITH 2 LOCATIONS



Cuyahoga County Fair Office  
(440) 243-0090



JMP website [www.jmproductionsinc.com](http://www.jmproductionsinc.com)

**"WORLD'S LARGEST DEMOLITION DERBY"<sup>SM</sup>  
2010 CUYAHOGA COUNTY FAIR ENTRY**

Please check what show(s) you are entering below.

- \_\_\_\_\_ **MINI VAN 8:00 PM - MONDAY, AUGUST 9<sup>th</sup>**
- \_\_\_\_\_ **PASSENGER CAR (1980 AND NEWER VEHICLES ONLY!) 8:00 PM - MONDAY, AUGUST 9<sup>th</sup>**
- \_\_\_\_\_ **COMPACT CAR 3:00 PM - SUNDAY, AUGUST 15<sup>th</sup>**
- \_\_\_\_\_ **PASSENGER CAR 3:00 PM - SUNDAY, AUGUST 15<sup>th</sup>**
- \_\_\_\_\_ **PASSENGER CAR 7:00 PM - SUNDAY, AUGUST 15<sup>th</sup>**

DRIVER'S NAME \_\_\_\_\_ Print Clearly

AGE \_\_\_\_\_ Social Security # \_\_\_\_\_

ADDRESS \_\_\_\_\_

TOWN \_\_\_\_\_

STATE \_\_\_\_\_ ZIP CODE \_\_\_\_\_

PHONE ( \_\_\_\_\_ ) \_\_\_\_\_

**EMAIL: If you would like your entry emailed to you in 2011, please provide your email address:** \_\_\_\_\_

**# OF CARS:** \_\_\_\_\_ X \$10 PRE-ENTRY FEE

**= Total Entry Fee Enclosed \$ \_\_\_\_\_**  
**(\$15 ENTRY AT PIT GATE)**

If my entry is accepted, I agree to compete for prize money and trophies as indicated on the Entry Form and agree to obey all rules and regulations. I understand that "The Decisions of the Officials are Final" as noted on the enclosed rules and understand my entry may be refused and fee refunded.

In conjunction with my acceptance in any event produced by JM Productions, Inc., I hereby grant exclusive rights to interviews, photographs, video/film of me, my automobile or likeness to JM Productions, Inc. without permission, reservation or financial consideration to use in any manner JM Productions, Inc. may wish.

DRIVER SIGNATURE \_\_\_\_\_

DATE \_\_\_\_\_ 2010

Office Use ONLY

Rec'd	Returned
Amount	Check #
Car #	Heat #